

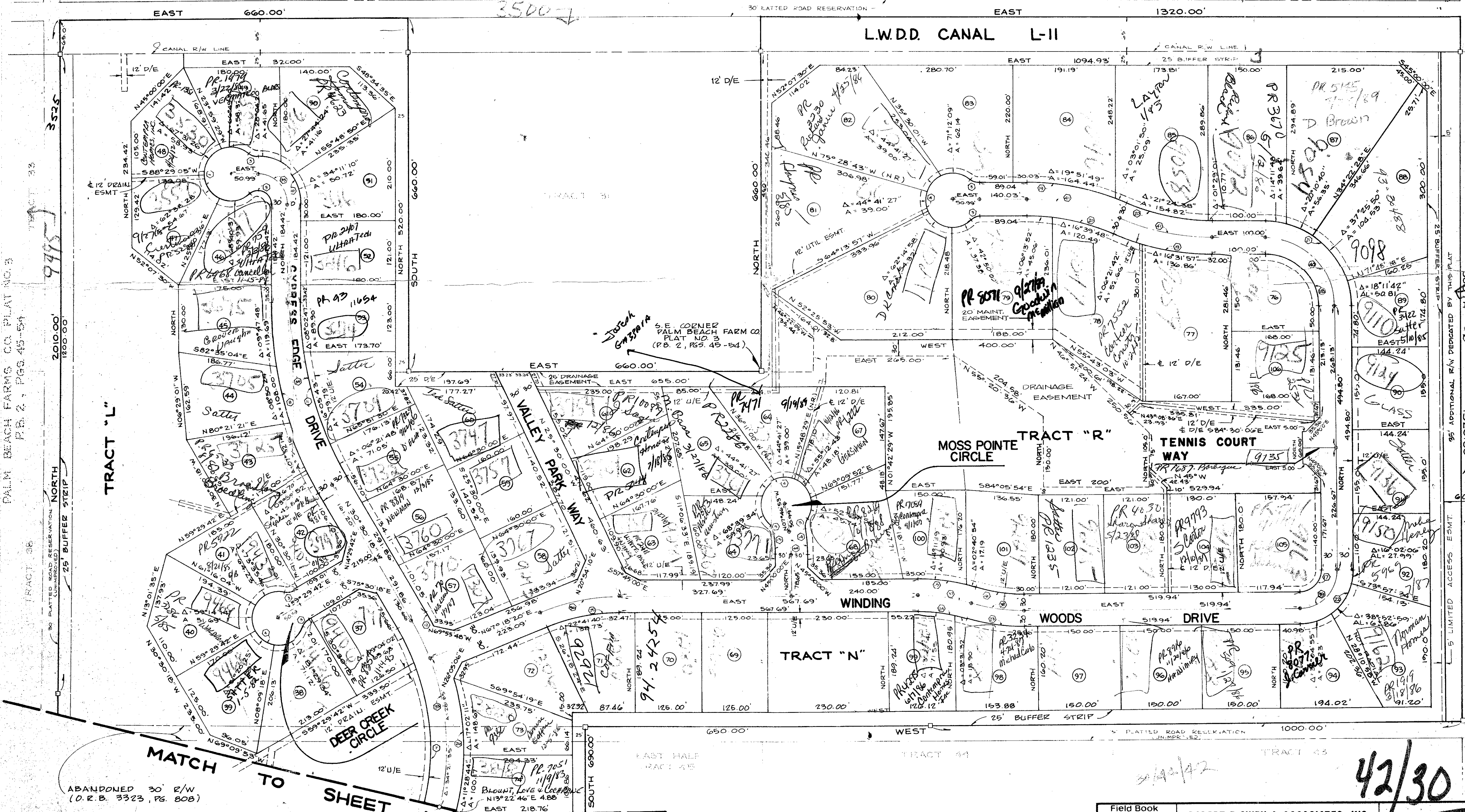
42/30

30

A PLANNED UNIT DEVELOPMENT CYPRESS TRAILS, P.U.D.

BEING A RE-PLAT OF A PORTION OF BLOCK 25,
PALM BEACH FARMS CO., PLAT NO. 3
AS RECORDED IN PLAT BOOK 2, PAGES 45-54
SHEET 3 OF 3

PALM BEACH FARMS CO.
PLAT NO. 3
P.B. 2, PGS. 45-54

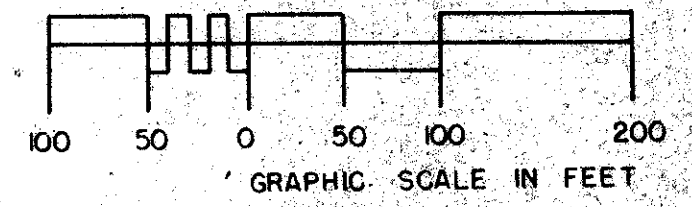


PALM BEACH FARMS CO.
PLAT NO. 3
P.B. 2, PGS. 45-54



0235-000

TURNOUT REQUIRED



IMPACT FEE
 PET. 80-60
 200' or more
 ZONE 17
 Collect

42/30

Field Book No. Pg.	ROBERT E. OWEN & ASSOCIATES, INC.	Job No.	80-106
Design L. GEARY	ENGINEERS · PLANNERS · SURVEYORS	Scale	1" = 100'
Drawn R. TEAL	WEST PALM BEACH FLORIDA	Date	MARCH, 1981
Checked	Not to be used for Construction until Approved.	Sheet	3
	Approved	File No.	BF-2313

PLAT OF
 CYPRESS TRAILS,
 P. U. D.

ABANDONED 30' R/W
(O.R.B. 3323, PG. 808)

MATCH TO SHEET NO. 2

PALM BEACH FARMS CO. PLAT NO. 3
P.B. 2, PGS. 45-54

TRACT 33

TRACT 36

TRACT 34

TRACT 35

BLOCK 25

BLOCK 24

LYONS ROAD

35' LIMITED ACCESS ESMT.

35' BUFFER STRIP

30' LATED ROAD RESERVATION

30' BUFFER STRIP

30' LATED ROAD RESERVATION

30' BUFFER STRIP